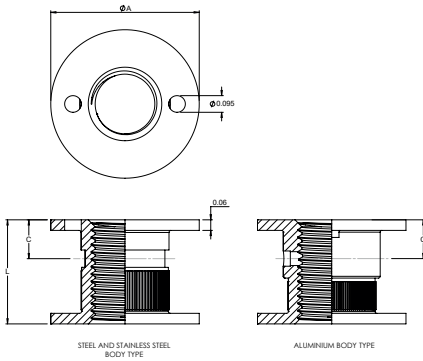
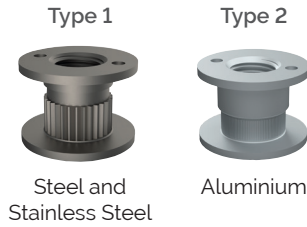


Potted Inserts

CM1833 INSERT, THROUGH THREADED

Available in:



Cross Reference

Clarendon Made	NAS Standards	SFS	The Young Engineers	Shur Lok
CM1833	NAS1833	EF1833	TYE2007	SL602

Table 1

Code	Thread	ϕA	C	L (min)	H (min)	Tab
06	.1380-32 UNJC - 3B	0.560	0.12	0.250	0.276	T3
08	.1640-32 UNJC - 3B				0.328	
3	.1900-32 UNJF - 3B				0.380	
4	.2500-28 UNJF - 3B	0.685	0.14	0.312	0.500	T6
5	.3125-24 UNJF - 3B		0.16		0.625	
6	.3750-24 UNJF - 3B	0.841	0.22	0.375	0.750	T9

Dimension in INCH

Table 2

Code	Material	Finish	Type
-	CARBON STEEL EN 1.0726	CADMIUM PLATE AMS-QQ-P-416, TYPE II, CLASS 2	Type 1
C	STAINLESS STEEL EN 1.4305	PASSIVATE PER AMS2700, METHOD 1, TYPE 2, CLASS 4	
A	ALUMINIUM 3.1354 T351	ANODISE PER MIL-A-8625 TYPE I, CLASS 1	Type 2

Table 3

Code	Special Finish (Stainless Steel Only)
P	CADMIUM PLATE AMS-QQ-P-416, TYPE II, CLASS 2
S	SILVER PLATE AMS2410

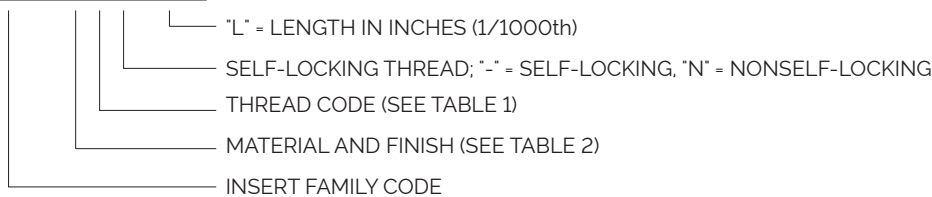
Table 4

Code	Solid Film Lubricant (Internal Threads Only)
M	MOLYKOTE PER AS5272, TYPE 1

PART NUMBER CALL OUT

NAS1833

CM1833-4-600



PART NUMBER CALL OUT: CM1833-CARBON STEEL-CADMIUM PLATE-.2500-28-SELF-LOCKING-.600"

