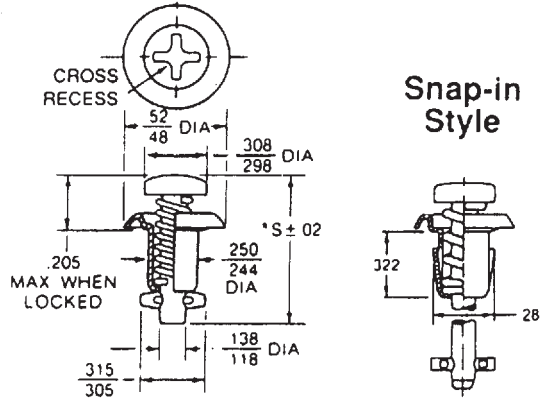


# Camlocs - 2600/2700 Series

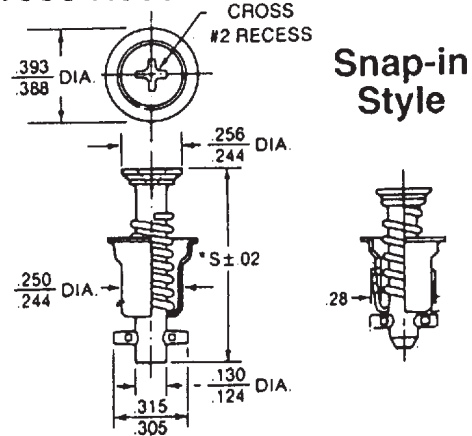
Camlocs have become the OEM chassis constructor's virtually universal choice for bodywork attachment. We stock the cross recess (Phillips) version of the 2600/2700 and 4002 series studs and receptacles detailed below. All dimensions are in inches.

## 26S8



$*S = .73 + (.03 \times \text{Dash No.})$

## 27S3

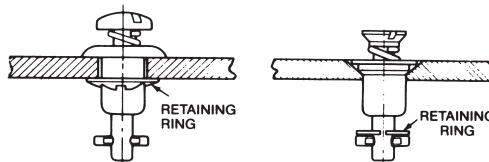


$*S = .58 + (.03 \times \text{Dash No.})$

STUD SERIES	STUD DIAMETER	STUD BODY RETAINING RING	STUD RETAINING SPLIT RING	WORKING STRENGTH ULTIMATE STRENGTH
2600	.138 .118	-5 and up (2600 LW)	Optional* (2600SW)	200 lb 300 lb
2700	.130 .124	Optional (27S5-1)	Yes (2600SW)	200 lb 300 lb

\* Allows stud assembly to move freely (float) within top panel. If float is required all studs (both head styles) require split retaining ring.

**2600 Series**  
Protruding stud and solid retaining ring.  
Installed with T-98-1 tool.



**2700 Series**  
Flush mounting stud and split retaining ring.

## 2600/2700 Stud Selection

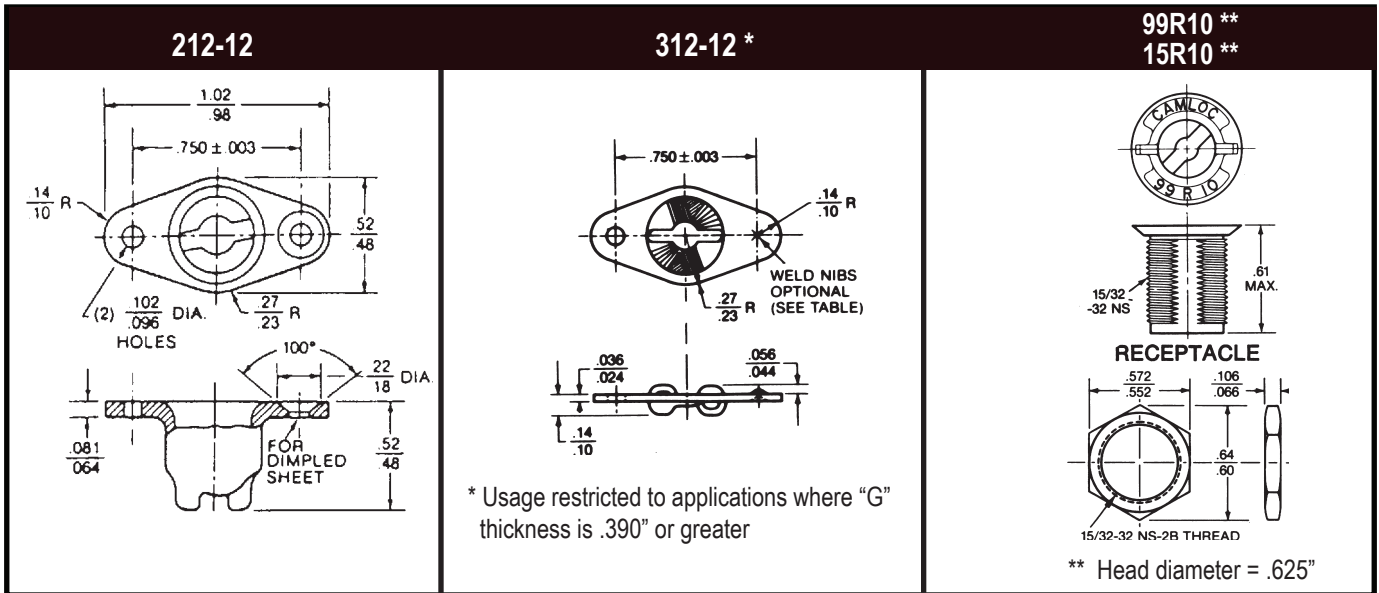
### TO DETERMINE STUD PART NUMBER:

1. Select receptacle to be used by referencing the illustration titled "2600/2700 Camloc Receptacles" on the next page, pg. 53
2. Determine "G" thickness per "Standard Mount Receptacle" & "Single Hole Mount Receptacle" illustrations on next page, pg. 53
3. Use the "2600/2700 Stud Selection Chart" on the next page, pg. 53 to determine the stud dash number **-or-** measure existing stud, compare length in chart below, and determine the stud dash number.

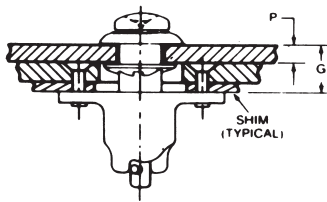
### "S" MEASUREMENT OF EXISTING STUDS:

STUD #	#1	#2	#3	#4	#5	#6	#7	#8	#9	#10	#11	#12	#13	#14	#15
2600	.760	.790	.820	.850	.880	.910	.940	.970	1.00	1.03	1.06	1.09	1.12	1.15	1.18
2700	.610	.640	.670	.700	.730	.760	.790	.820	.850	.880	.910	.940	.970	1.00	1.03

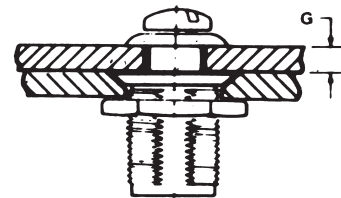
## 2600/2700 Camloc Receptacles



### Standard Mount Receptacle



### Single Hole Mount Receptacle



**NOTES:**

1. If the total thickness "G" is near the top of the thickness range given in the chart, then the next greater dash number is recommended.
2. Add .020" to "G" when using 99R10 Receptacle (single hole mount receptacle)

## 2600/2700 Stud Selection Chart

*Read stud dash number under receptacle type and across from "G" thickness*

"G" Total Thickness	312-12	99R10 212-12	"G" Total Thickness	312-12	99R10 212-12
.030-.059	-	1	.390-.419	1	13
.060-.089	-	2	.420-.449	2	14
.090-.119	-	3	.450-.479	3	15
.120-.149	-	4	.480-.509	4	16
.150-.179	-	5	.510-.539	5	17
.180-.209	-	6	.540-.569	6	18
.210-.239	-	7	.570-.599	7	19
.240-.269	-	8	.600-.629	8	20
.270-.299	-	9	.630-.659	9	21
.300-.329	-	10	.660-.689	10	22
.330-.359	-	11	.690-.719	11	23
.360-.389	-	12	.720-.749	12	24
			.750-.779	13	25