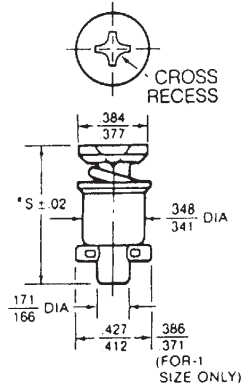


Camlocs - 4002 Series

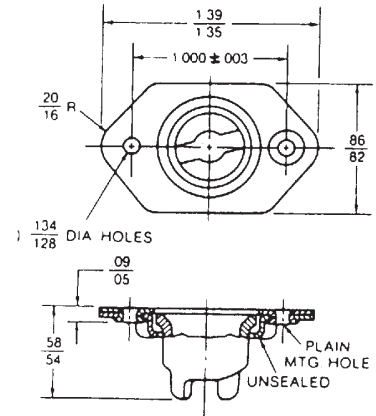
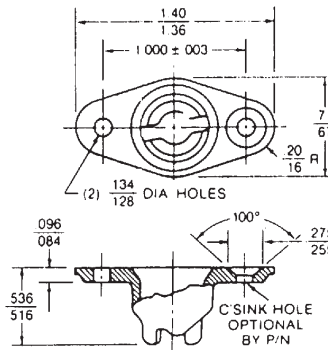
Stud Series	Stud Diameter	Grommet	Stud Retaining Split Ring	Working Strength Ultimate Strength
4002	.171 .166	Required in Top Panel	-16 and up (4002SW)	700 Lb 1050 Lb

40S5	214-16	244-16
------	--------	--------

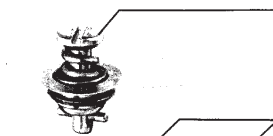


*S = .62 + (.03 x Dash No.)

Cross Recess



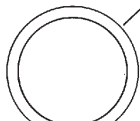
Floating (1/16" total)



STUD



GROMMET & GROMMET RETAINING RING (R4G)
must be installed in top of panel (Plus Flush Version shown for Ring Retained Grommets). Flare Retained Grommets are also available which do not use a Retaining Ring (see p. 56).

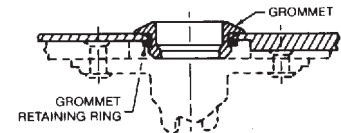


STUD RETAINING RING

Used for long studs (-16 or greater). Shorter studs (-15 and under) are self-captivating and do not require retaining rings.



RECEPTACLE



Grommet and Grommet Retaining Ring shown installed in panel