

**Coast Fabrication, Inc.**  
**[www.coastfab.com](http://www.coastfab.com)**  
**(714) 842-2603**  
**[info@coastfab.com](mailto:info@coastfab.com)**

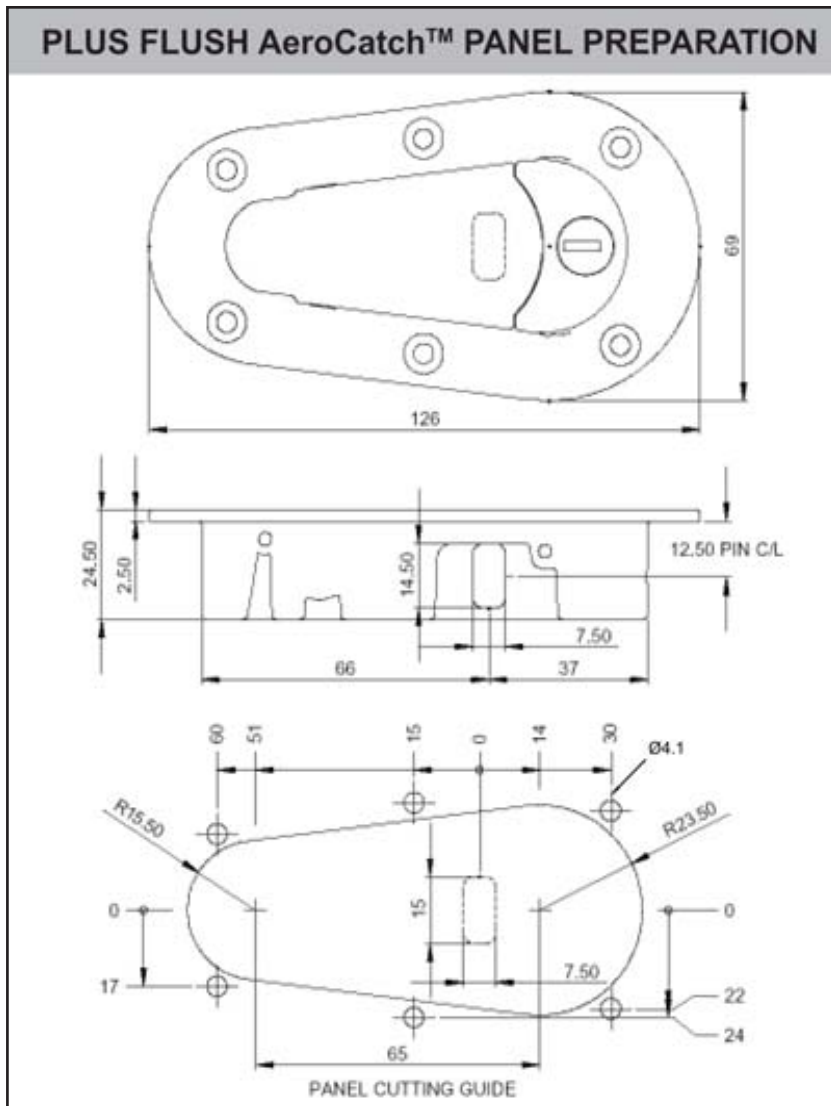
# ***AeroCatch®***

## ***Technical Information***



# AeroCatch Panel Preparation

All dimensions are in millimeters; version available with or without key-lock feature; drawing is for dimensional purposes only

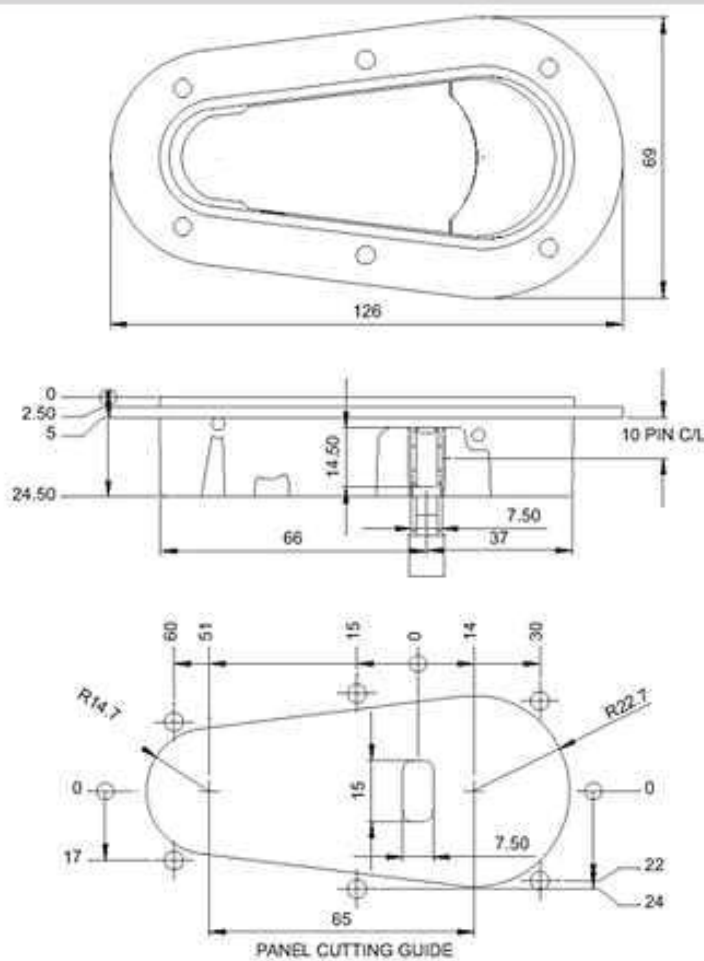


# AeroCatch Panel Preparation

All dimensions are in millimeters; version available with or without key-lock feature; drawing is for dimensional purposes only

## FLUSH AeroCatch Panel PREPARATION

LOCK FLUSH: key lock is not shown  
illustration is for dimensional purposes only.



# **AeroCatch**

## **Material Specifications**

### **Grivory HT2V-5H Product Description**

- **Grivory HT2V-5H is a 50% glass fibre reinforced engineering thermosplastic material based on a semi-crystalline, partially aromatic copolyamide**
- **Polymer designation acc. to ISO: PA 6T/66 Acc. to ASTM: PPA, polyphthalamide**
- **The main distinguishing feature of Grivory HT, when compared to other polyamides is its good performance at high temperatures, providing parts which are stiffer, stronger, and have better heat distortion stability and chemical resistance.**
- **Grivory HT is suitable for production of technical parts in the application fields of:**
  - **Electro**
  - **Electronics**
  - **Automotive**
  - **Safety Technology**
  - **Mechanical Engineering**

# AeroCatch Properties

## Mechanical Properties

		Standard	Unit	State	Grivory HT2V-5H
Tensile E-Modulus	1 mm/min	ISO 527	MPa	dry cond.	17500 17000
Tensile strength at yield	5 mm/min	ISO 527	MPa	dry cond.	250 225
Elongation at yield	5 mm/min	ISO 527	%	dry cond.	2 2
Impact strength	Charpy, 23°C	ISO170 / 1eU	kJ/m <sup>2</sup>	dry cond.	85 85
Impact Strength	Charpy, -30°C	ISO179 / 1eU	kJ/m <sup>2</sup>	dry cond.	70 70
Notched impact strength	Charpy, 23°C	ISO179 / 1eA	kJ/m <sup>2</sup>	dry cond.	13 13
Notched impact strength	Charpy, -30°C	ISO179 / 1eA	kJ/m <sup>2</sup>	dry cond.	13 13
Shore-D hardness		ISO 868		dry cond.	91 91

## Thermal Properties

		Standard	Unit	State	Grivory HT2V-5H
Melting Point	DSC	ISO 11357	°C	dry	310
Heat deflection temp. HDT/A	1.80 MPa	ISO 75	°C	dry	285
Heat deflection temp. HDT/C	8.00 MPa	ISO 75	°C	dry	240
Thermal expansion coefficient long.	23-55 °C	ISO11359	10 <sup>-4</sup> /K	dry	0.15
Thermal expansion coefficient trans.	23-55 °C	ISO 11359	10 <sup>-4</sup> /K	dry	0.55
Max. usage temp.	long term	ISO 2578	°C	dry	140
Max. usage temp.	short term	ISO 2578	°C	dry	240

## Electrical Properties

		Standard	Unit	State	Grivory HT2V-5H
Dielectric strength		IEC 60243-1	kV/mm	dry cond.	38 37
Comparative tracking index	CTI	IEC 60112		cond.	600
Specific volume resistivity		IEC 60093	Ω.m	dry cond.	10 <sup>10</sup> 10 <sup>10</sup>
Specific surface resistivity		IEC 60093	Ω	cond.	10 <sup>12</sup>

## General Properties

		Standard	Unit	State	Grivory HT2V-5H
Density		ISO 1183	g/cm <sup>3</sup>	dry	1.62
Flammability (UL94)	0.8 mm	ISO 1210	rating	-	HB
Water absorption	23°C/sat.	ISO 62	%	-	3.5
Moisture absorption	23 °C/50% r.h.	ISO 62	%	-	1.2
Linear mould shrinkage	long.	ISO 294	%	dry	0.10
Linear mould shrinkage	trans.	ISO 294	%	dry	0.70

# **AeroCatch Weights, Strengths & Additional Dimensions**

## **WEIGHT**

STANDARD = 90g/3.18oz.

LOCKING = 98g/3.46oz.

THREADED PIN (Aluminum): 19g/0.67oz.

THREAD = M10 x1.5

THREAD LENGTH: 95 mm

TOTAL PIN LENGTH: 125 mm

## **PULL OUT TESTS (Using Production Parts)**

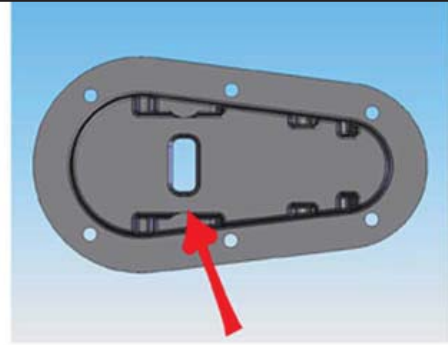
STANDARD MOUNT (pin through bottom): 650 lbs

SIDE MOUNT (pin through from side): 850 lbs

# ***AeroCatch:***

## ***Other Options***

### ***for Use***



TO USE THE AEROCATCH  
AS A DOOR LATCH REMOVE  
THIS SECTION OF MATERIAL

